

BOKOBZA

MACHINERY IMPORTS

BOKOBZA MACHINERY IMPORTS

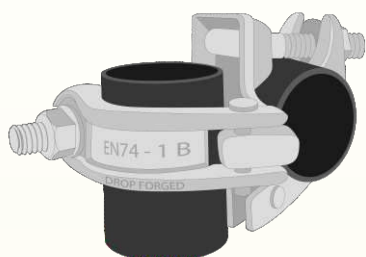
PRODUCT CATALOGUE



- Steels Scaffolding
- Shuttering
- Farmwork System

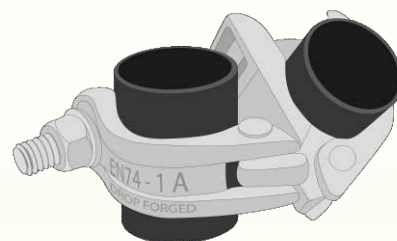
Si - FORGED COUPLERS

Si-British Right Angle Coupler (48.3 x 48.3)



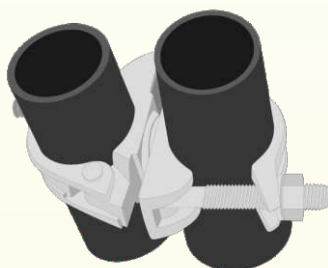
CODE	Suitable for O.D. (mm)	Available Finish		
		ZINC	HOT DIP	SELF
Si-FC-5001	48.3 x 48.3	ZINC	HOT DIP	SELF

Si-British Swivel Coupler (48.3 x 48.3)



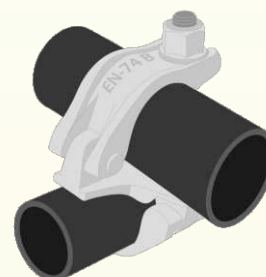
CODE	Suitable for O.D. (mm)	Available Finish		
		ZINC	HOT DIP	SELF
Si-FC-5002	48.3 x 48.3	ZINC	HOT DIP	SELF

Si-British Swivel Coupler (60.3 x 60.3)



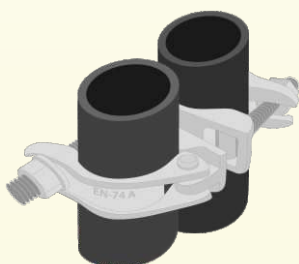
CODE	Suitable for O.D. (mm)	Available Finish		
		ZINC	HOT DIP	SELF
Si-FC-5003	60.3 x 60.3	ZINC	HOT DIP	SELF

Si-German Right Angle Coupler (48.3 x 48.3)



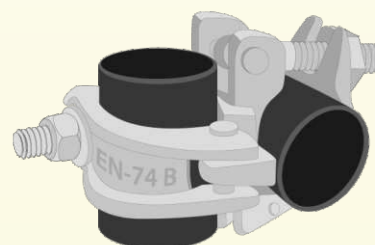
CODE	Suitable for O.D. (mm)	Available Finish		
		ZINC	HOT DIP	SELF
Si-FC-5004	48.3 x 48.3	ZINC	HOT DIP	SELF

Si-German Swivel Coupler (48.3 x 48.3)



CODE	Suitable for O.D. (mm)	Available Finish		
		ZINC	HOT DIP	SELF
Si-FC-5005	48.3 x 48.3	ZINC	HOT DIP	SELF

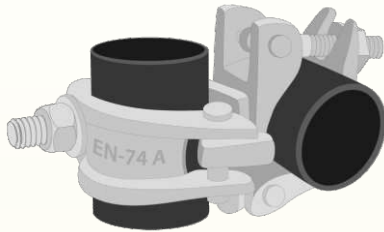
Si-American Right Angle Coupler (48.3 x 48.3)



CODE	Suitable for O.D. (mm)	Available Finish		
		ZINC	HOT DIP	SELF
Si-FC-5006	48.3 x 48.3	ZINC	HOT DIP	SELF

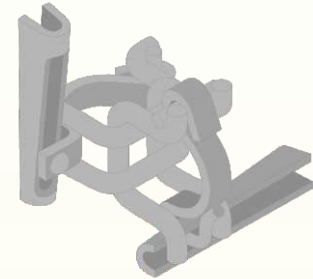
Si - FORGED COUPLERS

Si-American Swivel Coupler (48.3 x 48.3)



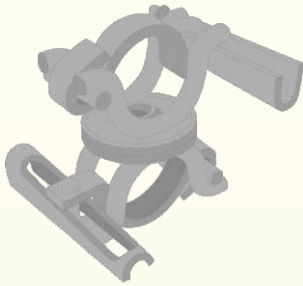
CODE	Suitable for O.D. (mm)	Available Finish		
Si-FC-5007	48.3 x 48.3	ZINC	HOT DIP	SELF

Si-Wire Right Angle Coupler (48.3 x 48.3)



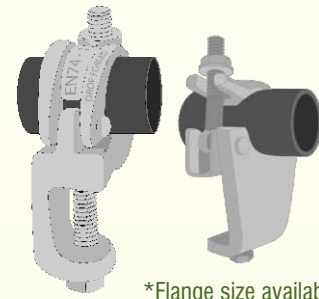
CODE	Suitable for O.D. (mm)	Available Finish		
Si-FC-5008	48.3 x 48.3	ZINC	HOT DIP	SELF

Si-Wire Swivel Coupler (48.3 x 48.3)



CODE	Suitable for O.D. (mm)	Available Finish		
Si-FC-5009	48.3 x 48.3	ZINC	HOT DIP	SELF

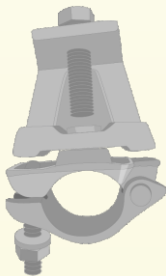
Si-Fixed Girder Coupler



*Flange size available 45mm x 75mm

CODE	Suitable for O.D. (mm)	Available Finish		
Si-FC-5010	48.3	ZINC	HOT DIP	SELF

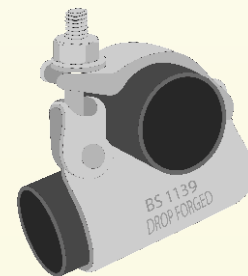
Si-Swivel Girder Coupler



*Flange size available 45mm x 75mm

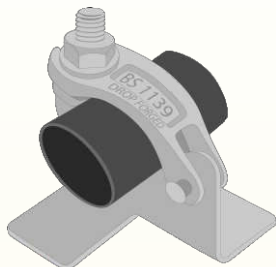
CODE	Suitable for O.D. (mm)	Available Finish		
Si-FC-5011	48.3	ZINC	HOT DIP	SELF

Si-Putlog Coupler



CODE	Suitable for O.D. (mm)	Available Finish		
Si-FC-5012	48.3 x 48.3	ZINC	HOT DIP	SELF

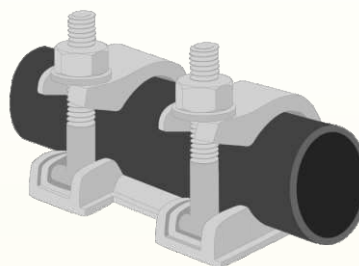
Si-Board Retaining Coupler



*Suitable for board size 38mm, 42mm, 45mm

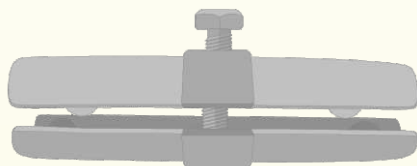
CODE	Suitable for O.D. (mm)	Available Finish		
Si-FC-5013	48.3	ZINC	HOT DIP	SELF

Si-Forged Sleeve Coupler (48.3 x 48.3)



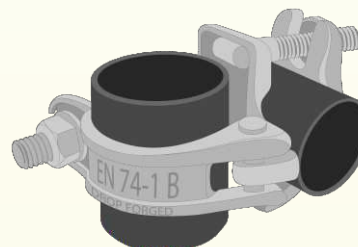
CODE	Suitable for O.D. (mm)	Available Finish		
Si-FC-5014	48.3 x 48.3	ZINC	HOT DIP	SELF

Si-Forged Joint Pin



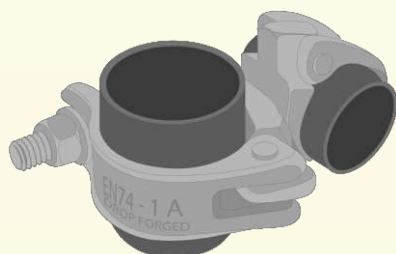
CODE	Suitable for O.D. (mm)	Available Finish		
Si-FC-5015	48.3 x 48.3	ZINC	HOT DIP	SELF

Si-Combination Right Angle Coupler (48.3 x 60.3)



CODE	Suitable for O.D. (mm)	Available Finish		
Si-FC-5016	48.3 x 60.3	ZINC	HOT DIP	SELF

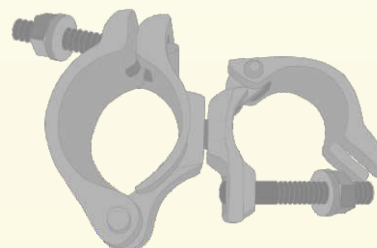
Si-Combination Swivel Coupler (48.3 x 60.3)



*Flange size available 45mm x 75mm

CODE	Suitable for O.D. (mm)	Available Finish		
Si-FC-5017	48.3 x 60.3	ZINC	HOT DIP	SELF

Si-Combination Swivel Coupler (48.3 x 76.0)



CODE	Suitable for O.D. (mm)	Available Finish		
Si-FC-5018	48.3 x 76.0	ZINC	HOT DIP	SELF

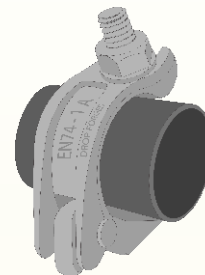
Si - FORGED COUPLERS

Si-Combination Swivel Coupler (48.3 x 89.0)



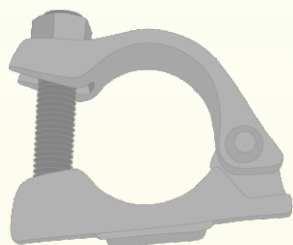
CODE	Suitable for O.D. (mm)	Available Finish		
		ZINC	HOT DIP	SELF
Si-FC-5019	48.3 x 89.0	ZINC	HOT DIP	SELF

Si-British Half Swivel Coupler



CODE	Suitable for O.D. (mm)	Available Finish		
		ZINC	HOT DIP	SELF
Si-FC-5020	48.3, 60.3, 76.0	ZINC	HOT DIP	SELF

Si-German Half Swivel Coupler



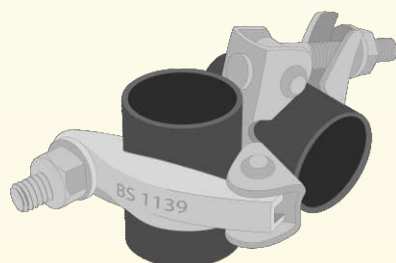
CODE	Suitable for O.D. (mm)	Available Finish		
		ZINC	HOT DIP	SELF
Si-FC-5021	48.3, 60.3, 76.0	ZINC	HOT DIP	SELF

Si-Half Swivel Coupler with Bolt



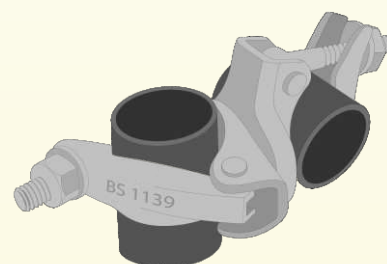
CODE	Suitable for O.D. (mm)	Available Finish		
		ZINC	HOT DIP	SELF
Si-FC-5022	48.3	ZINC	HOT DIP	SELF

Si-Pressed Right Angle Coupler (48.3 x 48.3)



CODE	Suitable for O.D. (mm)	Available Finish
		ZINC
Si-PC-6001	48.3 x 48.3	ZINC

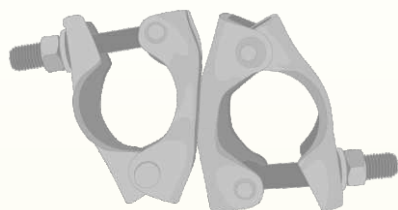
Si-Pressed Swivel Coupler (48.3 x 48.3)



CODE	Suitable for O.D. (mm)	Available Finish
		ZINC
Si-PC-6002	48.3 x 48.3	ZINC

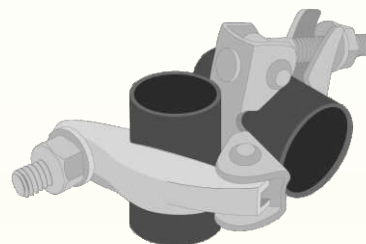
Si - FORGED COUPLERS

Si-Pressed Swivel Coupler (60.3 x 60.3)



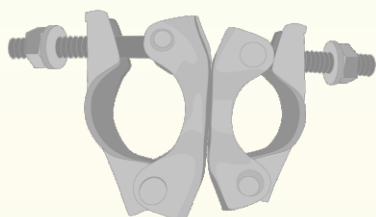
CODE	Suitable for O.D. (mm)	Available Finish
Si-PC-6003	60.3 x 60.3	ZINC

Si-Pressed Right Angle Coupler (48.3 x 60.3)



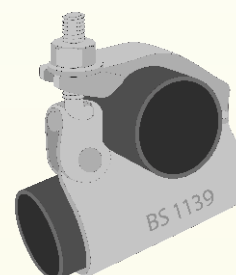
CODE	Suitable for O.D. (mm)	Available Finish
Si-PC-6004	48.3 x 60.3	ZINC

Si-Pressed Swivel Coupler (48.3 x 60.3)



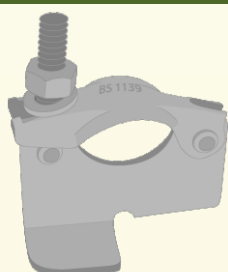
CODE	Suitable for O.D. (mm)	Available Finish
Si-PC-6005	48.3 x 60.3	ZINC

Si-Putlog Coupler



CODE	Suitable for O.D. (mm)	Available Finish
Si-PC-6006	48.3 x 48.3	ZINC

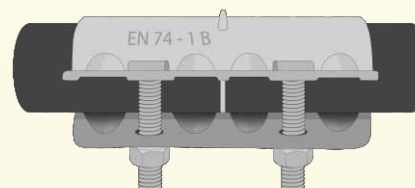
Si-Board Retaining Coupler



*Suitable for Board size 38mm, 42mm & 45mm

CODE	Suitable for O.D. (mm)	Available Finish
Si-PC-6007	48.3	ZINC

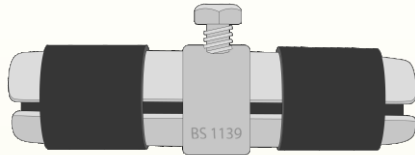
Si-Pressed Sleeve Coupler



CODE	Suitable for O.D. (mm)	Available Finish
Si-PC-6008	48.3 x 48.3	ZINC

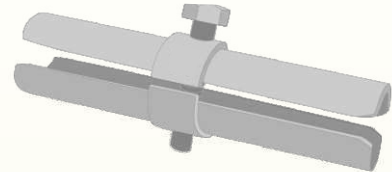
Si - FORGED COUPLERS

Si-Pressed Joint Pin Light Duty



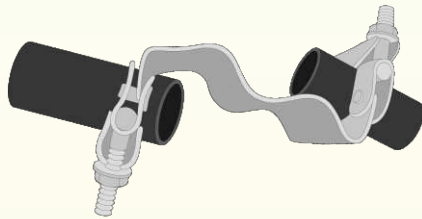
CODE	Suitable for O.D. (mm)	Available Finish
Si-PC-6009	48.3 x 48.3	ZINC

Si-Pressed Joint Pin Heavy Duty



CODE	Suitable for O.D. (mm)	Available Finish
Si-PC-6010	48.3 x 48.3	ZINC

Si-Pressed Roofing Coupler



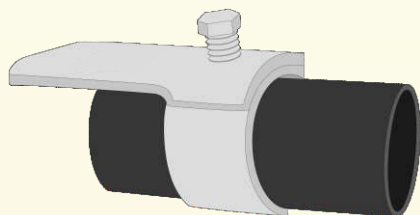
CODE	Suitable for O.D. (mm)	Available Finish
Si-PC-6011	48.3 x 48.3	ZINC

Si-Pressed Oyster Coupler



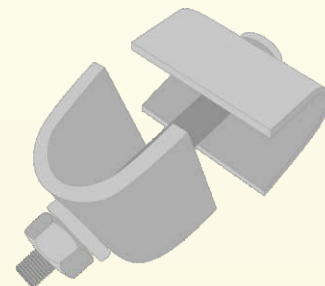
CODE	Suitable for O.D. (mm)	Available Finish
Si-PC-6012	48.3 x 48.3	ZINC

Si-Pressed Put Head Adapter



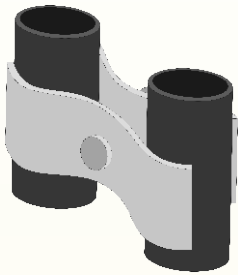
CODE	Suitable for O.D. (mm)	Available Finish
Si-PC-6013	48.3	ZINC

Si-Universal Clamp



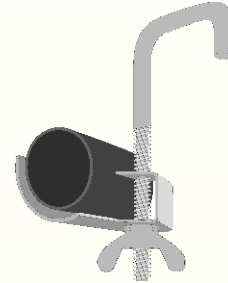
CODE	Suitable for O.D. (mm)	Available Finish
Si-PC-6014	-----	ZINC

Si-Pressed Fencing Coupler



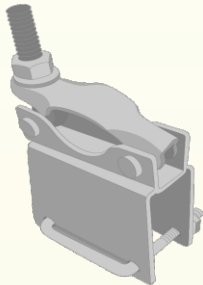
CODE	Suitable for O.D. (mm)	Available Finish
Si-PC-6015	42.0 x 48.3	ZINC

Si-Pressed Ladder Clamp Type 1



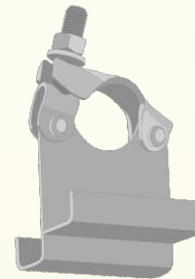
CODE	Suitable for O.D. (mm)	Available Finish
Si-PC-6016	48.3	ZINC

Si-Pressed Ladder Clamp Type 2



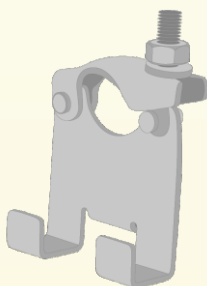
CODE	Suitable for O.D. (mm)	Available Finish
Si-PC-6017	48.3	ZINC

Si-Pressed Ladder Clamp Type 3



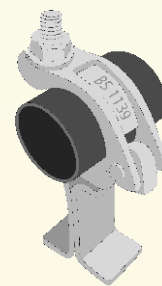
CODE	Suitable for O.D. (mm)	Available Finish
Si-PC-6018	48.3	ZINC

Si-Pressed Ladder Clamp Type 4



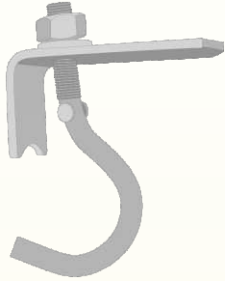
CODE	Suitable for O.D. (mm)	Available Finish
Si-PC-6019	48.3	ZINC

Si-Pressed Toe Board Type 1



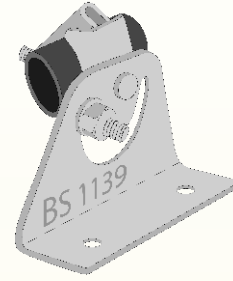
CODE	Suitable for O.D. (mm)	Available Finish
Si-PC-6020	48.3	ZINC

Si-Pressed Toe Board Coupler Type 2



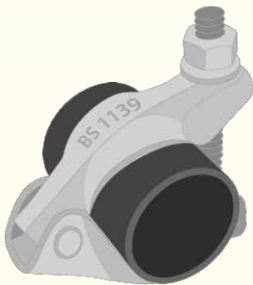
CODE	Suitable for O.D. (mm)	Available Finish
Si-PC-6021	48.3	ZINC

Si-Pressed Stair Case Coupler



CODE	Suitable for O.D. (mm)	Available Finish
Si-PC-6022	48.3	ZINC

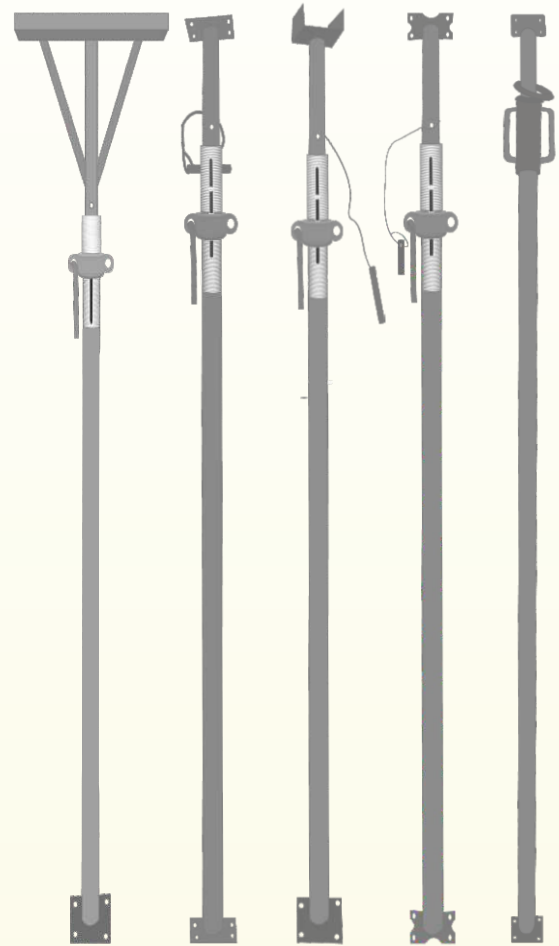
Si-Pressed Half Swivel Coupler



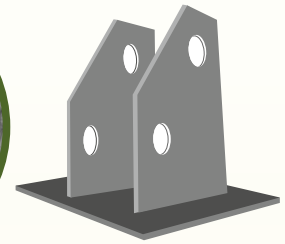
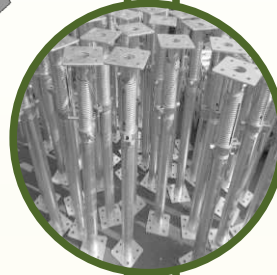
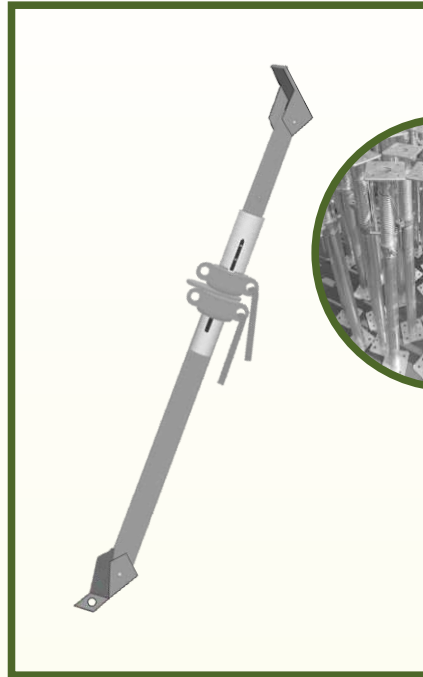
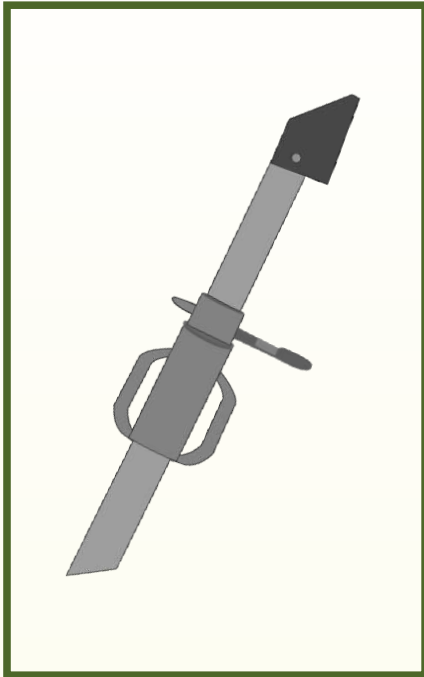
CODE	Suitable for O.D. (mm)	Available Finish
Si-PC-6023	48.3	ZINC

Classification

Class	Length at maximum extension.	Nominal characteristic strength
	max. m	R KN
A 25	2.50	20.4
A 30	3.00	17.0
A 35	3.50	14.6
A 40	4.00	12.8
B 25	2.50	27.2
B 30	3.00	22.7
B 35	3.50	19.4
B 40	4.00	17.0
B 45	4.50	15.1
B 50	5.00	13.6
B 55	5.50	12.4
C 25	2.50	40.8
C 30	3.00	34.0
C 35	3.50	29.1
C 40	4.00	25.5
C 45	4.50	22.7
C 50	5.00	20.4
C 55	5.50	18.6
D 25	2.50	34.0
D 30	3.00	
D 35	3.50	
D 40	4.00	
D 45	4.50	
D 50	5.00	
D 55	5.50	
E 25	2.50	51.0
E 30	3.00	
E 35	3.50	
E 40	4.00	
E 45	4.50	
E 50	5.00	
E 55	5.50	



Bokobza Machinery Imports Si Telescopic and Si push-pull props as per EN 1065 standard and ensures to meet the defined parameters. The diameters chart for prop :classes A, B, C, D & E are even below



SI Telescopic and SI Push-Pull Props are available in hot dip, electro galvanized and paint finish.

CODE	PRODUCT	SHUT HEIGHT (M)	OPEN HEIGHT (M)	WEIGHT (Kg)		
				HOT DIP	POWDER COATED	PAINTED
KI-4004-01	KI PUSH PULL PROP	1.50	2.50	27.40	26.75	26.60
KI-4004-02	KI PUSH PULL PROP	1.70	3.00	29.60	28.90	28.75
KI-4004-03	KI PUSH PULL PROP	2.00	3.50	31.70	30.95	30.75
KI-4004-04	KI PUSH PULL PROP	2.50	4.00	33.70	32.90	32.70
KI-4004-05	KI PUSH PULL PROP	2.50	4.50	38.40	37.45	37.30
KI-4004-06	KI PUSH PULL PROP	3.00	5.00	40.40	39.50	39.25
KI-4004-07	KI PUSH PULL PROP	3.50	5.50	42.30	41.30	41.10
KI-4004-08	KI PUSH PULL PROP	4.00	6.00	44.40	43.45	43.10

G-PIN



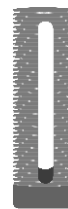
SI 10063

G-PIN



SI 10064

PROP SLEEVE



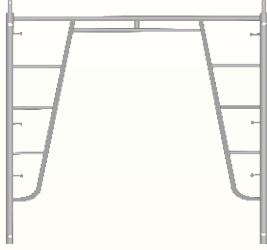
SI 10028

CUP NUT



SI 10018

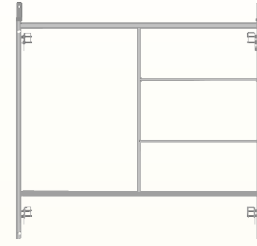
SI-Walk Thru Frame



Available in Powder Coated & Paint Finish

Code	Product	Width (mm)	Height (mm)
SI-7001-01	SI Walk Thru Frame	914	1950
SI-7001-02	SI Walk Thru Frame	914	2011
SI-7001-03	SI Walk Thru Frame	1066	1950
SI-7001-04	SI Walk Thru Frame	1066	2011
SI-7001-05	SI Walk Thru Frame	1524	1950

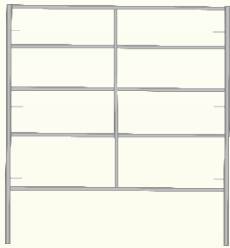
SI-Mason Frame



Available in Powder Coated & Paint Finish

Code	Product	Width (mm)	Height (mm)
SI-7002-01	SI Mason Frame	1524	609
SI-7002-02	SI Mason Frame	1524	915
SI-7002-03	SI Mason Frame	1524	1219
SI-7002-04	SI Mason Frame	1524	1524
SI-7002-05	SI Mason Frame	1524	1828

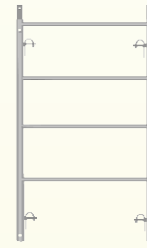
SI-Double Ladder Frame



Available in Powder Coated & Paint Finish

Code	Product	Width (mm)	Height (mm)
SI-7003-01	SI Double Ladder Frame	1524	915
SI-7003-02	SI Double Ladder Frame	1524	1219
SI-7003-03	SI Double Ladder Frame	1524	1402
SI-7003-04	SI Double Ladder Frame	1524	1524
SI-7003-05	SI Double Ladder Frame	1524	1828

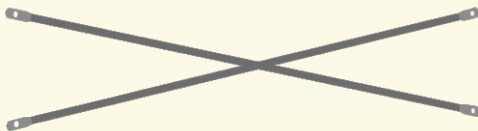
SI-Single Ladder Frame



Available in Powder Coated & Paint Finish

Code	Product	Width (mm)	Height (mm)
SI-7004-01	SI Single Ladder Frame	711	915
SI-7004-02	SI Single Ladder Frame	711	1219
SI-7004-03	SI Single Ladder Frame	711	1524
SI-7004-04	SI Single Ladder Frame	711	1829
SI-7004-05	SI Single Ladder Frame	915	915
SI-7004-06	SI Single Ladder Frame	915	1219
SI-7004-07	SI Single Ladder Frame	915	1524
SI-7004-08	SI Single Ladder Frame	915	1829
SI-7004-09	SI Single Ladder Frame	1219	915
SI-7004-10	SI Single Ladder Frame	1219	1219
SI-7004-11	SI Single Ladder Frame	1219	1524
SI-7004-12	SI Single Ladder Frame	1219	1829

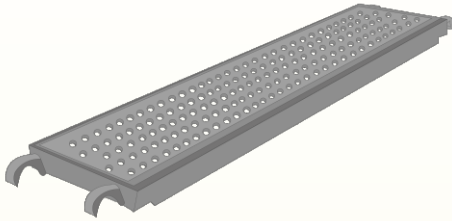
SI-Frame Cross Brace



Available in Powder Coated & Paint Finish

Code	Product	Width (mm)	Height (mm)
SI-7005-01	SI Cross Brace	1524	1524
SI-7005-02	SI Cross Brace	1524	1219
SI-7005-03	SI Cross Brace	1524	915

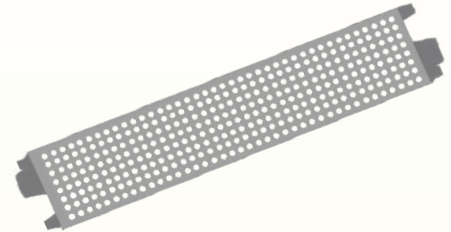
SI-Steel Plank



Available in Painted Pre-Galvanised & Hot Dip Finish

Code	Product	Length (m)	Width (mm)	Sheet Thickness (mm)
SI-8001-01	SI Steel Plank	0.610	320	2.0/1.8
SI-8001-02	SI Steel Plank	1.090	320	2.0/1.8
SI-8001-03	SI Steel Plank	1.520	320	2.0/1.8
SI-8001-04	SI Steel Plank	2.570	320	2.0/1.8
SI-8001-05	SI Steel Plank	3.072	320	2.0/1.8

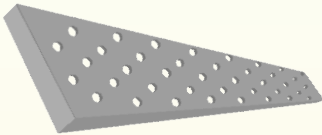
SI-Low Profile Steel Plank



Available in Painted Pre-Galvanised & Hot Dip Finish

Code	Product	Length (m)	Width (mm)	Sheet Thickness (mm)
SI-8002-01	SI Low Profile Steel Plank	0.790	230	2.0/1.8
SI-8002-02	SI Low Profile Steel Plank	1.070	230	2.0/1.8
SI-8002-03	SI Low Profile Steel Plank	1.220	230	2.0/1.8
SI-8002-04	SI Low Profile Steel Plank	1.520	230	2.0/1.8
SI-8002-05	SI Low Profile Steel Plank	2.070	230	2.0/1.8
SI-8002-06	SI Low Profile Steel Plank	2.570	230	2.0/1.8
SI-8002-07	SI Low Profile Steel Plank	3.050	230	2.0/1.8

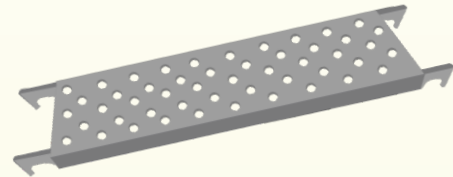
SI-Baton Board



Available in Painted Pre-Galvanised & Hot Dip Finish

Code	Product	Length (m)	Width (mm)	Sheet Thickness (mm)
SI-8003-01	SI Baton Board	1.00	225	2.0/1.8
SI-8003-02	SI Baton Board	1.50	225	2.0/1.8
SI-8003-03	SI Baton Board	2.00	225	2.0/1.8
SI-8003-04	SI Baton Board	2.50	225	2.0/1.8
SI-8003-05	SI Baton Board	3.00	225	2.0/1.8
SI-8003-06	SI Baton Board	4.00	225	2.0/1.8

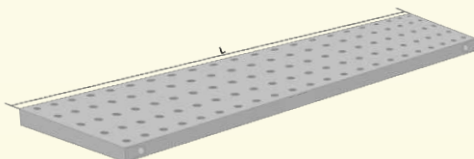
SI-American Type Steel Walkboard with Hooks



Available in Painted Pre-Galvanised & Hot Dip Finish

Code	Product	Length (m)	Width (mm)	Sheet Thickness (mm)
SI-8004-01	SI American Type Steel Walkboard with Hooks	0.910	230	2.0/1.8
SI-8004-02	SI American Type Steel Walkboard with Hooks	1.070	230	2.0/1.8
SI-8004-03	SI American Type Steel Walkboard with Hooks	1.520	230	2.0/1.8
SI-8004-04	SI American Type Steel Walkboard with Hooks	2.130	230	2.0/1.8
SI-8004-05	SI American Type Steel Walkboard with Hooks	3.050	230	2.0/1.8

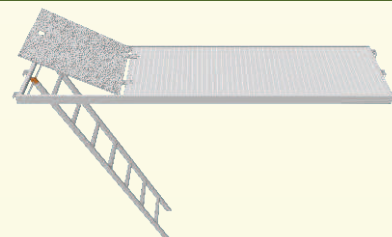
SI-Kwik Baton Board



Available in Painted Pre-Galvanised & Hot Dip Finish

Code	Product	Sheet Thickness (mm)	Length (m)	Weight (Kg.)	
				Painted	Hot Dip Galvanised
SI-3011-01	SI Kwik Baton Board	2	1.200	9.12	9.42
SI-3011-02	SI Kwik Baton Board	2	1.800	12.87	13.25
SI-3011-03	SI Kwik Baton Board	2	2.400	16.68	17.17

SI-Aluminium Plank with Man Hole



Available in Painted Pre-Galvanised & Hot Dip Finish

Code	Product	Size (mm)	Elective Length (mm)	Weight (Kg.) (Hot Dip Galvanized)
SI-2011-01	SI Aluminium Plank with Man Hole	711x177	2.13	33
SI-2011-02	SI Aluminium Plank with Man Hole	711x254	3.05	41.2

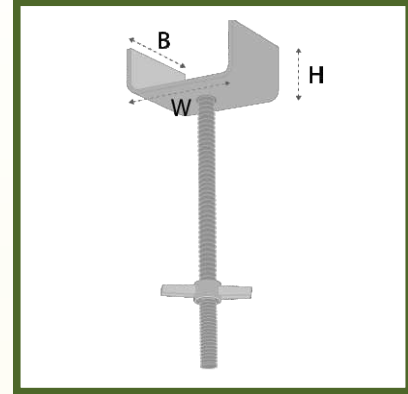
SI-Base Jack Hallow & Solid-Type



Available in Painted Pre-Galvanised & Hot Dip Finish

Code	DIA (mm)	Available Length (m)	Finish
SI-9001-01	30	350, 450, 500	ZINC, PAINTED AND HOT DIP GALVANIZED
SI-9001-02	32		
SI-9001-03	34	600, 650, 660,	
SI-9001-04	36	750, 870, 1000,	
SI-9001-05	38		
SI-9001-06	48	1200, 1500	

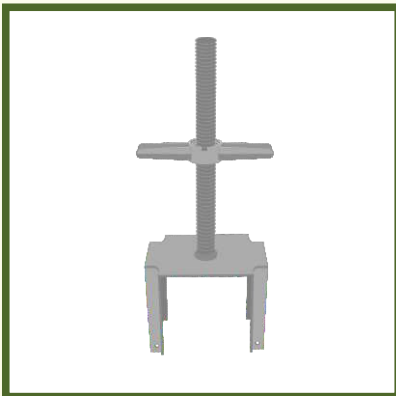
SI-U-Head Jack



Available in Painted Pre-Galvanised & Hot Dip Finish

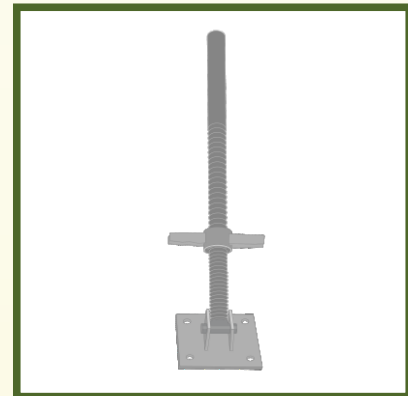
Code	Size (mm)	U-Head Size WxBxHxT (mm)	Weight (Kg.)		
			Galvanized	Painted	Hot Dip Galvanized
SI-9002-01	38x4x500	100x100x50x5	2.96	2.96	3.05
SI-9002-02	38x4x600	100x100x50x5	3.3	3.3	3.4

SI-Forkhead Jack



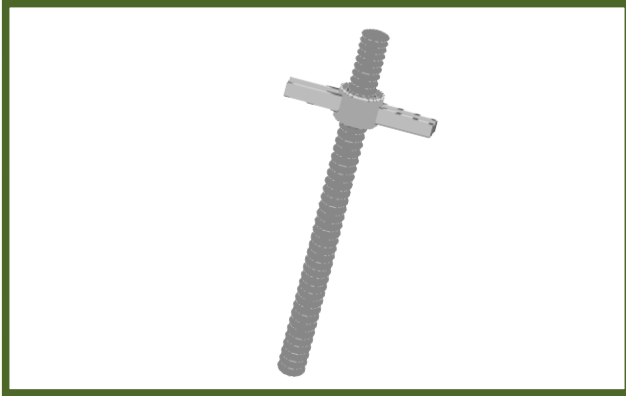
Code	Size (mm)	Weight (Kg.)		
		Galvanized	Painted	Hot Dip Galvanized
SI-9003-01	38x4x450	5.07	5.07	5.22
SI-9003-02	38x4x550	5.40	5.40	5.56
SI-9003-03	38x4x650	5.75	5.74	5.91
SI-9003-04	38x4x750	6.07	6.07	6.25

SI-Swivel Jack



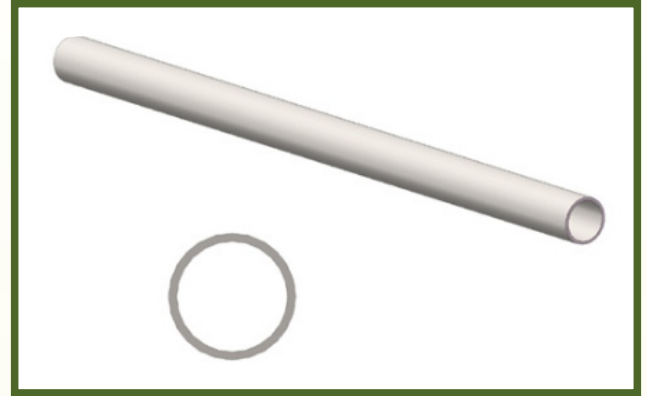
Code	Size (mm)	Plate Size (mm)	Weight (Kg.)		
			Galvanized	Painted	Hot Dip Galvanized
SI-9004-01	38x4x530	150x150x5	3.21	3.21	3.30
SI-9004-02	38x4x690	150x150x6	3.75	3.75	3.86

SI-Universal Jack Solid-Type



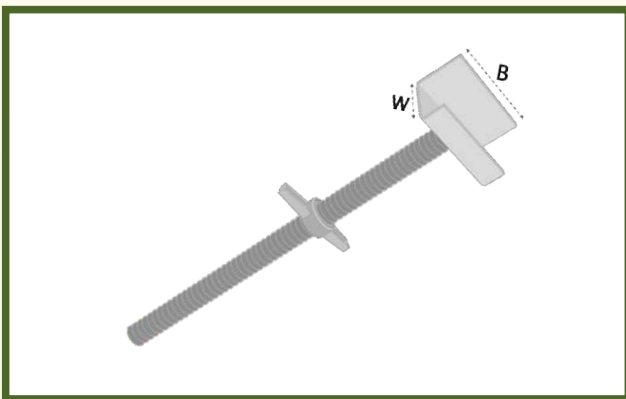
Code	Size (mm)	Galvanized	Weight (Kg.)		
			Painted	Hot Dip Galvanized	
SI-9006-03	38x4x600	4.80	4.80	5.00	
SI-9006-04	38x4x750	6.00	6.00	6.30	

SI-Scaffolding Pipe



Code	Grade	Diameter	Thickness	Minimum Tensile	Minimum Yield
SI-10073	S-235	48.3 mm	3.2 mm	360 Mpa	235 Mpa

SI-J-Head Jack

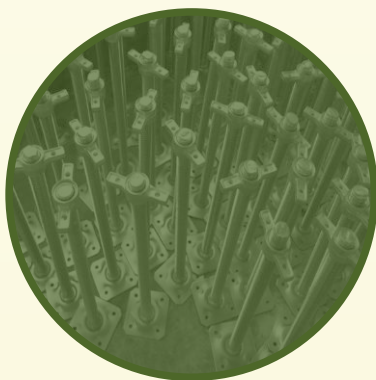


Code	Size (mm)	Plate Size (mm)	Weight (Kg.)		
			Galvanized	Painted	Hot Dip Galvanized
SI-9005-01	38x4x450	150x75x5	3.09	3.09	3.27
SI-9005-02	38x4x610	150x75x6	3.61	3.61	3.82

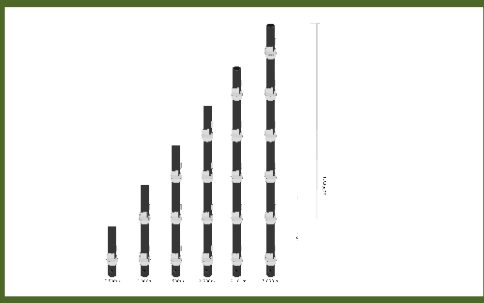
SI-Universal Jack Hallow-Type



Code	Product	Weight (Kg.)		
		Galvanized	Painted	Hot Dip Galvanized
SI-9006-01	38x4x600	2.5	2.5	2.57
SI-9006-02	38x4x750	3.01	3.01	3.1

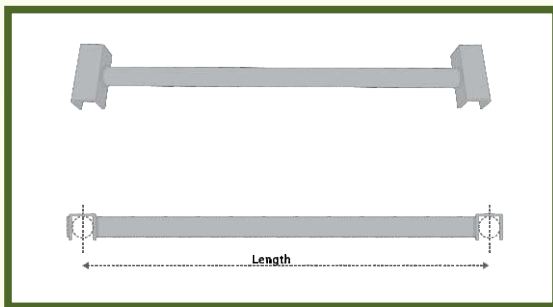


SI-Cup Standard



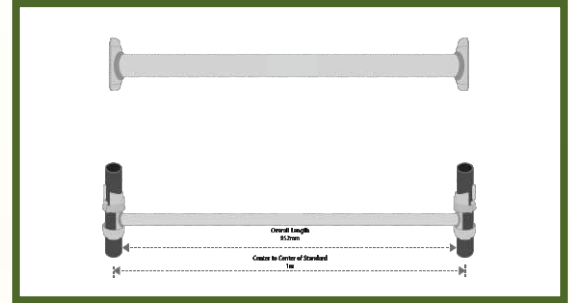
Code	Product	Pipe Dia X Thickness (mm)	Size (m)	Weight (Kg.)	
				Painted	Hot Dip Galvanised
SI-1001-01	SI Cup Standard	48.3 x 3.2	0.500	3.25	3.45
SI-1001-02	SI Cup Standard	48.3 x 3.2	1.000	5.65	5.98
SI-1001-03	SI Cup Standard	48.3 x 3.2	1.500	8.05	8.50
SI-1001-04	SI Cup Standard	48.3 x 3.2	2.000	10.40	11.05
SI-1001-05	SI Cup Standard	48.3 x 3.2	2.500	12.80	13.60
SI-1001-06	SI Cup Standard	48.3 x 3.2	3.000	15.20	16.10

SI-Cup Transom



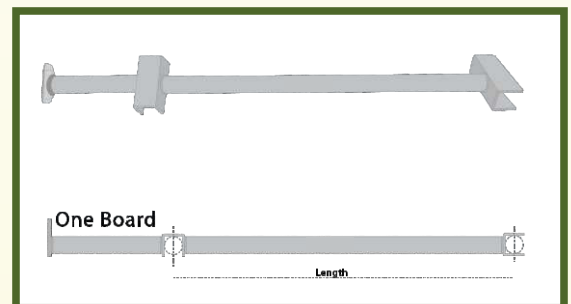
Code	Product	Pipe Dia X Thickness (mm)	Size (m)	Weight (Kg.)	
				Painted	Hot Dip Galvanised
SI-1003-01	SI Cup Transom	48.3 x 3.2	0.560	3.87	4.10
SI-1003-02	SI Cup Transom	48.3 x 3.2	0.790	4.69	4.97
SI-1003-03	SI Cup Transom	48.3 x 3.2	0.910	5.12	5.42
SI-1003-04	SI Cup Transom	48.3 x 3.2	1.070	5.69	6.03
SI-1003-05	SI Cup Transom	48.3 x 3.2	1.220	6.22	6.59
SI-1003-06	SI Cup Transom	48.3 x 3.2	1.520	7.29	7.73
SI-1003-07	SI Cup Transom	48.3 x 3.2	1.830	8.39	8.90
SI-1003-08	SI Cup Transom	48.3 x 3.2	2.130	9.46	10.03
SI-1003-09	SI Cup Transom	48.3 x 3.2	2.440	10.57	11.20
SI-1003-10	SI Cup Transom	48.3 x 3.2	2.740	11.63	12.23
SI-1003-11	SI Cup Transom	48.3 x 3.2	3.050	12.74	13.50

SI-Cup Ledger



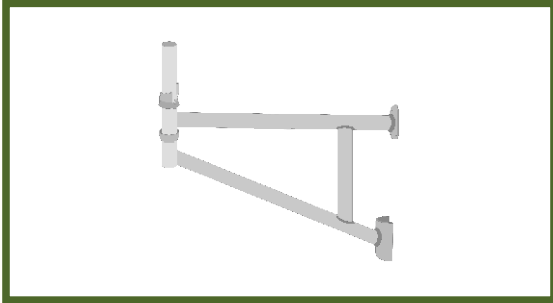
Code	Product	Pipe Dia X Thickness (mm)	Size (m)	Weight (Kg.)	
				Painted	Hot Dip Galvanised
SI-1002-01	SI Cup Ledger	48.3 x 3.2	0.560	2.14	2.27
SI-1002-02	SI Cup Ledger	48.3 x 3.2	0.790	2.96	3.14
SI-1002-03	SI Cup Ledger	48.3 x 3.2	0.910	3.39	3.59
SI-1002-04	SI Cup Ledger	48.3 x 3.2	1.070	3.96	4.19
SI-1002-05	SI Cup Ledger	48.3 x 3.2	1.220	4.49	4.76
SI-1002-06	SI Cup Ledger	48.3 x 3.2	1.520	5.56	5.89
SI-1002-07	SI Cup Ledger	48.3 x 3.2	1.830	6.66	7.06
SI-1002-08	SI Cup Ledger	48.3 x 3.2	2.130	7.73	8.20
SI-1002-09	SI Cup Ledger	48.3 x 3.2	2.440	8.84	9.37
SI-1002-10	SI Cup Ledger	48.3 x 3.2	2.740	9.90	10.50
SI-1002-11	SI Cup Ledger	48.3 x 3.2	3.050	11.01	11.67

SI-Cup Inside Transom



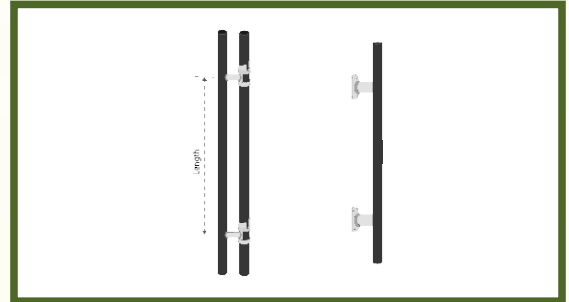
Code	Product	Pipe Dia X Thickness (mm)	Size (m)	Weight (Kg.)	
				Painted	Hot Dip Galvanised
SI-1004-01	SI Cup Inside Transom	48.3 x 3.2	0.500	5.29	5.44
SI-1004-02	SI Cup Inside Transom	48.3 x 3.2	1.000	6.77	6.95
SI-1004-03	SI Cup Inside Transom	48.3 x 3.2	1.500	8.22	8.50
SI-1004-04	SI Cup Inside Transom	48.3 x 3.2	2.000	9.71	10.00

SI-Cup Hot Up Bracket



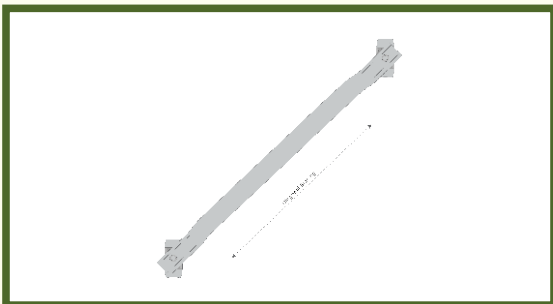
Code	Product	Size (m)	Weight (Kg.)	
			Painted	Hot Dip Galvanised
SI-1005-01	SI Cup Hot Up Bracket	0.570	5.53	5.70
SI-1005-02	SI Cup Hot Up Bracket	0.800	7.47	7.70

SI-Cup Beam Bracket



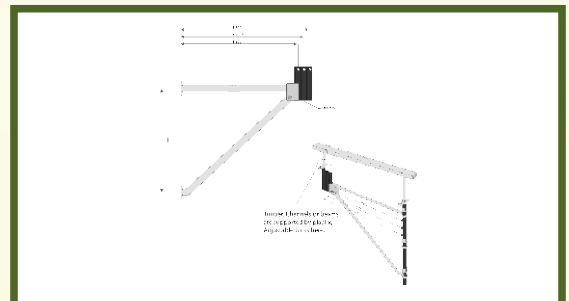
Code	Product	Size (m)	Weight (Kg.)	
			Painted	Hot Dip Galvanised
SI-1006-01	SI Cup Beam Bracket	1.000	6.70	7.10
SI-1006-02	SI Cup Beam Bracket	1.500	8.85	9.34

SI-Cup Diagonal



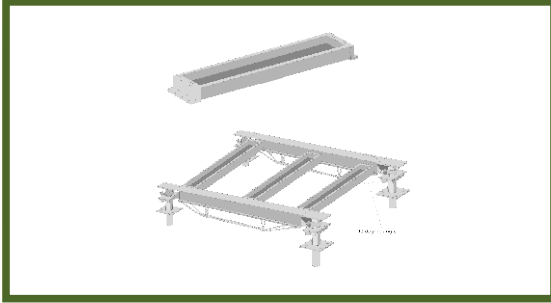
Code	Product	Size (m)	Weight (Kg.)	
			Painted	Hot Dip Galvanised
SI-1007-01	SI Cup Diagonal	2.340	6.98	7.20
SI-1007-02	SI Cup Diagonal	2.520	7.47	7.70
SI-1007-03	SI Cup Diagonal	2.920	8.44	8.70
SI-1007-04	SI Cup Diagonal	3.150	9.02	9.30
SI-1007-05	SI Cup Diagonal	3.390	9.70	10.00
SI-1007-06	SI Cup Diagonal	3.650	10.28	10.60

SI-Cup Cantilever Frame



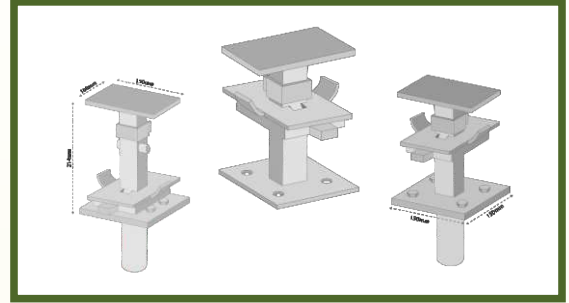
Code	Product	Size (m)	Weight (Kg.)	
			Painted	Hot Dip Galvanised
SI-1008-01	SI Cup Cantilever Frame	1.000	16.30	17.20
SI-1008-02	SI Cup Cantilever Frame	1.500	17.77	18.78

SI-Cup Infill Beam



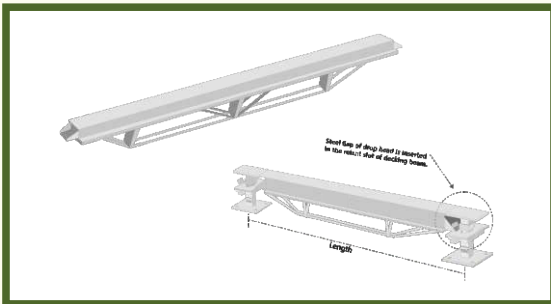
Code	Product	Size (m)	Weight (Kg.)	
			Painted	Hot Dip Galvanised
SI-1009-01	SI Cup Infill Beam	0.900	5.40	5.65
SI-1009-02	SI Cup Infill Beam	1.000	5.95	6.20
SI-1009-03	SI Cup Infill Beam	1.500	8.52	8.82
SI-1009-04	SI Cup Infill Beam	1.700	9.52	9.91

SI-Cup Drop Head



Code	Product	Size (m)	Weight (Kg.)	
			Painted	Hot Dip Galvanised
SI-1010-01	SI Cup Drop Head	0.150x0.150x0.124	5.25	5.50

SI-Cup Decking Beam



Code	Product	Size (m)	Weight (Kg.)	
			Painted	Hot Dip Galvanised
SI-1011-01	SI Cup Decking Beam	1.200	13.96	14.52
SI-1011-02	SI Cup Decking Beam	1.800	19.80	20.62
SI-1011-03	SI Cup Decking Beam	2.500	28.20	29.26

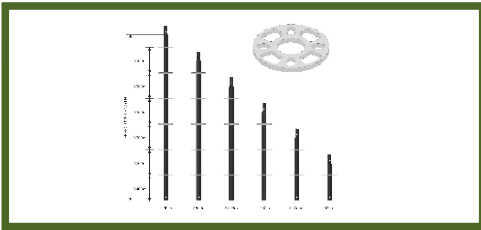
SI CUP SYSTEM is a robust system which has easy to operate capability, manufactured in full-compliance with the EN-12810 and EN-12811 Standards.

Pipes of high tensile steel grade S-235, S-275 and S-345 and forged top cup and ledger blade ensure the intrinsic strength of the system and it does not crack when hammered during application.

Certified welding is our another contributing feature it's done with our latest automatic "WELDING SPM" of brand (Feronius Austria) which itself is self-certified to comply with the welding standard EN3834-2 (Fusion welding).

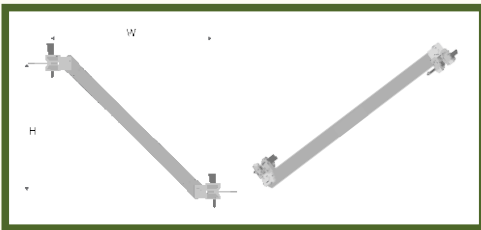
Hot Dip Galvanized Finish with average thickness of 100 Microns with high quality Zinc makes SI CUP SYSTEM an "All-Weather Tolerant" system.

SI-Ring Standard



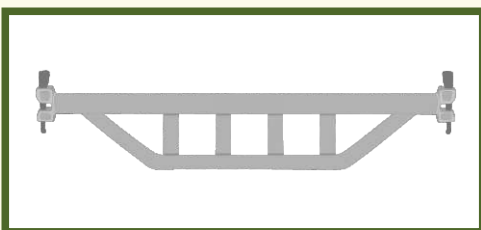
Code	Product	Pipe Dia X Thickness (mm)	Size (m)	Weight (Kg.) Hot Dip Galvanised
SI-2001-01	SI Ring Standard	48.3 x 3.2	0.500	3.10
SI-2001-02	SI Ring Standard	48.3 x 3.2	1.000	5.50
SI-2001-03	SI Ring Standard	48.3 x 3.2	1.500	7.90
SI-2001-04	SI Ring Standard	48.3 x 3.2	2.000	10.30
SI-2001-05	SI Ring Standard	48.3 x 3.2	2.500	12.60
SI-2001-06	SI Ring Standard	48.3 x 3.2	3.000	15.02

SI-Ring Diagonal



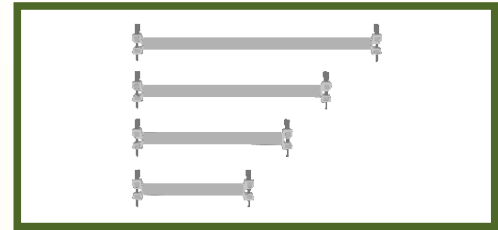
Code	Product	Pipe Dia X Thickness (mm)	Size (m) (W x H)	Weight (Kg.) Hot Dip Galvanised
SI-2003-01	SI Ring Diagonal	48.3 x 2.5	916 x 2000	7.90
SI-2003-02	SI Ring Diagonal	48.3 x 2.5	1219 x 2000	8.40
SI-2003-03	SI Ring Diagonal	48.3 x 2.5	1520 x 2000	8.90
SI-2003-04	SI Ring Diagonal	48.3 x 2.5	2530 x 2000	11.05
SI-2003-05	SI Ring Diagonal	48.3 x 2.5	3048 x 2000	12.30

SI-Ring Bridge Ledger



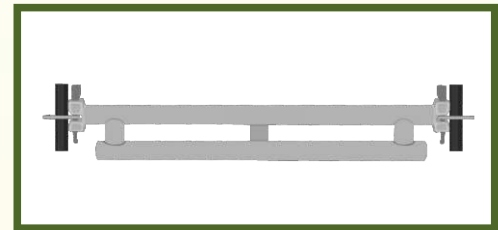
Code	Product	Size (m)	Weight (Kg.) Hot Dip Galvanised
SI-2005-01	SI Ring Bridge Ledger	1.57	10.39
SI-2005-02	SI Ring Bridge Ledger	1.82	14.95
SI-2005-03	SI Ring Bridge Ledger	2.13	17.35
SI-2005-04	SI Ring Bridge Ledger	2.43	20.44
SI-2005-05	SI Ring Bridge Ledger	3.05	21.61

SI-Ring Ledger



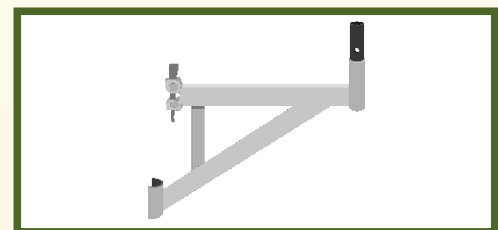
Code	Product	Pipe Dia X Thickness (mm)	Size (m)	Weight (Kg.) Hot Dip Galvanised
SI-2002-01	SI Ring Ledger	48.3 x 3.2	0.619	3.0
SI-2002-02	SI Ring Ledger	48.3 x 3.2	0.916	4.3
SI-2002-03	SI Ring Ledger	48.3 x 3.2	1.219	5.2
SI-2002-04	SI Ring Ledger	48.3 x 3.2	1.520	6.3
SI-2002-05	SI Ring Ledger	48.3 x 3.2	2.530	10.2
SI-2002-06	SI Ring Ledger	48.3 x 3.2	3.050	12.1

SI-Ring Double Ledger



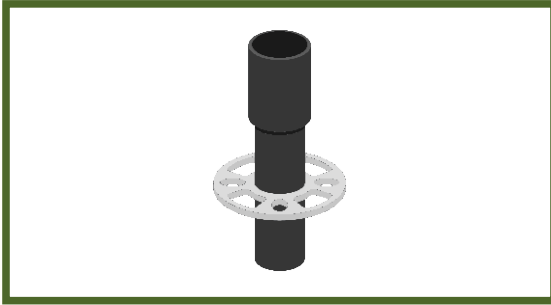
Code	Product	Size (m)	Weight (Kg.) Hot Dip Galvanised
SI-2003-01	SI Ring Double Ledger	2.07	15.6
SI-2003-02	SI Ring Double Ledger	2.57	18.6
SI-2003-03	SI Ring Double Ledger	3.05	23.5

SI-Ring Board Bracket



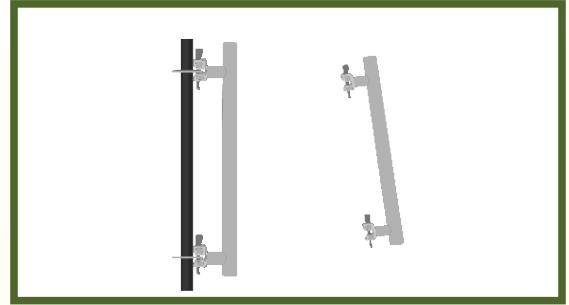
Code	Product	Size (m)	Weight (Kg.) Hot Dip Galvanised
SI-2006-01	SI Ring Board Bracket	0.65	7.27
SI-2006-02	SI Ring Board Bracket	0.88	8.70

SI-Ring Base Collor



Code	Product	Size (mm)	Weight (Kg.) Hot Dip Galvanised
SI-2007	SI Ring Base Collor	48.3 x 230	2.00

SI-Ring Suspended Connector



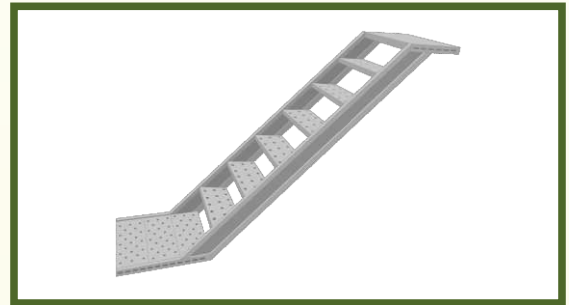
Code	Product	Size (mm)	Weight (Kg.) Hot Dip Galvanised
SI-2008	SI Ring Suspended Connector	0.50	3.20

SI-Ring Base Jack



Code	Product	Size (mm)	Weight (Kg.) Hot Dip Galvanised
SI-2008	SI Ring Base Jack	38 x 4 x 600	3.40

SI-Ring Ladder



Code	Product	Effective Length (M)	Tread Length (M)	Weight (Kg.) Hot Dip Galvanised
SI-2009-01	SI Ring Ladder	0.82	0.76	6.30
SI-2009-02	SI Ring Ladder	0.86	0.80	9.70
SI-2009-03	SI Ring Ladder	1.02	0.96	7.10
SI-2009-04	SI Ring Ladder	1.08	1.03	8.40

SI RING SYSTEM is a carefully engineered system and **“THE-BEST-COMBINATION”** of materials, manufacturing processes, protective coatings and in-house testing of child parts. **SI-RING SYSTEM** is manufactured to deliver the recommended performance because its full compliance with the **EN 12810** and **EN 12811 Standards**.

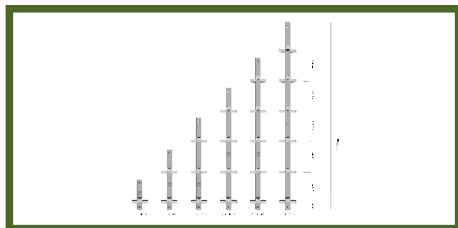
Pipes of high tensile steel grade **S-235** and **S-345** and **wedge & brace ends** of grade **C-25** ensure the intrinsic strength of the system. With brace-end and wedge-ends manufactured by **WAX CASTING PROCESS** makes it sure that you get the quality on which you can have a carefree trust.

Certified welding is our another contributing feature it's done with our latest automatic **“RINGLOCK WELDING SPM”** of brand **Feronius (Austria)** which is itself self-certified to comply with the welding standard **EN3834-2 (Welding fusion)**.

Hot Dip Galvanized Finish of average thickness of **100 Microns** with high quality Zinc makes **SI RING SYSTEM** an **“All-Weather Tolerant”**- system.

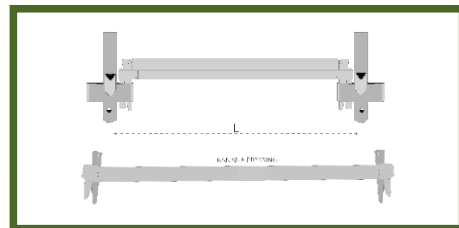
OTHERS TECHNICAL FEATURES Yield Minimum 480 Mpa, Tensile Minimum 580 of **ERW Pipe** which is being used for **RLS**.

SI-Kwik Standard



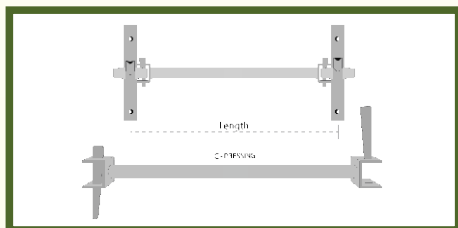
Code	Product	Pipe Dia X Thickness (mm)	Size (m)	Weight (Kg.)	
				Painted	Hot Dip Galvanised
SI-3001-01	SI Kwik Standard	48.3 x 3.2	0.500	2.41	2.52
SI-3001-02	SI Kwik Standard	48.3 x 3.2	1.000	4.83	5.01
SI-3001-03	SI Kwik Standard	48.3 x 3.2	1.500	7.20	7.53
SI-3001-04	SI Kwik Standard	48.3 x 3.2	2.000	9.45	9.65
SI-3001-05	SI Kwik Standard	48.3 x 3.2	2.500	11.89	12.29
SI-3001-06	SI Kwik Standard	48.3 x 3.2	3.000	14.20	14.67

SI-Kwik Ledger (Banana Pressing)



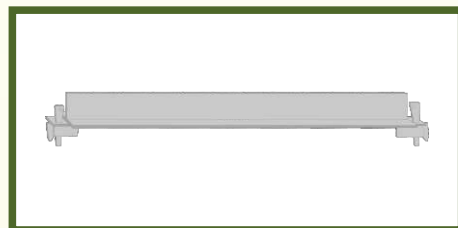
Code	Product	Pipe Dia X Thickness (mm)	Size (m)	Weight (Kg.)	
				Painted	Hot Dip Galvanised
SI-3002-01	SI Kwik Ledger (Banana Pressing)	48.3 x 3.2	0.400	3.30	3.40
SI-3002-02	SI Kwik Ledger (Banana Pressing)	48.3 x 3.2	0.800	3.81	3.92
SI-3002-03	SI Kwik Ledger (Banana Pressing)	48.3 x 3.2	1.200	5.38	5.51
SI-3002-04	SI Kwik Ledger (Banana Pressing)	48.3 x 3.2	1.800	7.36	7.58
SI-3002-05	SI Kwik Ledger (Banana Pressing)	48.3 x 3.2	2.400	9.73	10.02
SI-3002-06	SI Kwik Ledger (Banana Pressing)	48.3 x 3.2	2.500	10.15	10.44

SI-Kwik Ledger (C-Pressing)



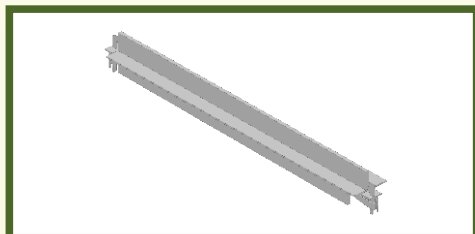
Code	Product	Pipe Dia X Thickness (mm)	Size (m)	Weight (Kg.)	
				Painted	Hot Dip Galvanised
SI-3002-01	SI Kwik Ledger (C-Pressing)	48.3 x 3.2	0.700	3.19	3.29
SI-3002-02	SI Kwik Ledger (C-Pressing)	48.3 x 3.2	0.800	3.86	3.98
SI-3002-03	SI Kwik Ledger (C-Pressing)	48.3 x 3.2	1.200	5.35	5.51
SI-3002-04	SI Kwik Ledger (C-Pressing)	48.3 x 3.2	1.800	7.16	7.37
SI-3002-05	SI Kwik Ledger (C-Pressing)	48.3 x 3.2	2.400	9.42	9.70
SI-3002-06	SI Kwik Ledger (C-Pressing)	48.3 x 3.2	2.500	9.62	9.92

SI-Kwik Transom



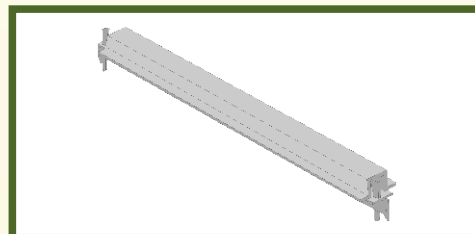
Code	Product	Pipe Dia X Thickness (mm)	Size (m)	Weight (Kg.)	
				Painted	Hot Dip Galvanised
SI-3004-01	SI Kwik Transom	4.5	0.500	4.22	4.35
SI-3004-02	SI Kwik Transom	4.5	0.700	5.77	5.94
SI-3004-03	SI Kwik Transom	4.5	0.800	5.95	6.13
SI-3004-04	SI Kwik Transom	4.5	1.200	8.50	8.75

SI-Kwik Flat Bar Transom



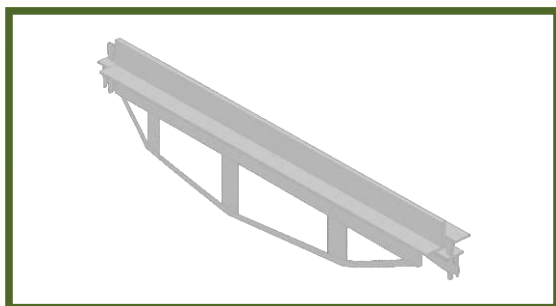
Code	Product	Angle Size (mm)	Sheet Size (mm)	Size (m)	Weight (Kg.)	
					Painted	Hot Dip Galvanised
SI-3005-01	SI Kwik Bar Transom	50 x 50 x 5	40 x 6	1.800	17.25	17.75
SI-3005-02	SI Kwik Bar Transom	50 x 50 x 5	40 x 6	2.400	22.15	22.79

SI-Kwik Return Transom



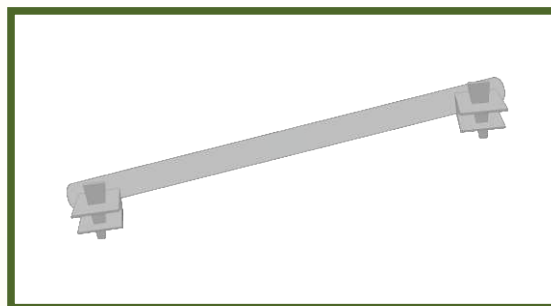
Code	Product	Size (m)	Weight (Kg.)	
			Painted	Hot Dip Galvanised
SI-3006-01	SI Kwik Return Transom	0.700	7.78	7.95
SI-3006-02	SI Kwik Return Transom	0.800	8.45	8.69
SI-3006-03	SI Kwik Return Transom	1.200	11.12	11.45

SI-Kwik String Transom



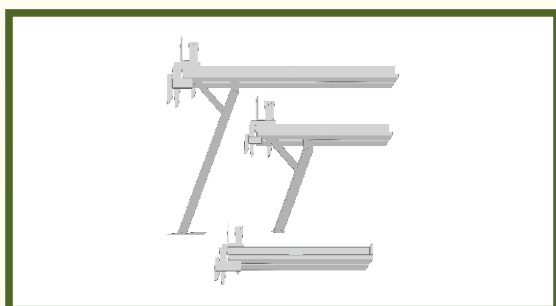
Code	Product	Size (m)	Weight (Kg.)	
			Painted	Hot Dip Galvanised
SI-3007-01	SI Kwik Bow String Transom	2.400	22.60	23.26

SI-Kwik Flat Bar Transom



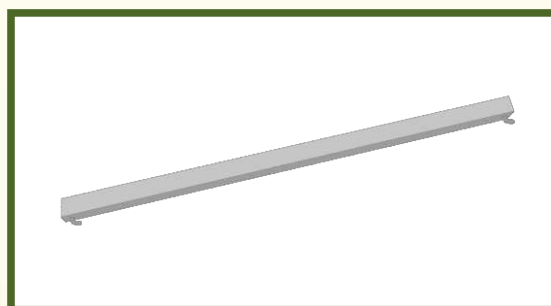
Code	Product	Pipe Dia X Thickness (mm)	Size (m)	Weight (Kg.)	
				Painted	Hot Dip Galvanised
SI-3008-01	SI Kwik Brace	48.3 x 3.2	0.700	5.36	5.52
SI-3008-02	SI Kwik Brace	48.3 x 3.2	0.800	6.07	6.25
SI-3008-03	SI Kwik Brace	48.3 x 3.2	1.200	7.57	7.80
SI-3008-04	SI Kwik Brace	48.3 x 3.2	1.800	9.45	9.73

SI-Kwik Stage Bracket



Code	Product	Type	Weight (Kg.)	
			Painted	Hot Dip Galvanised
SI-3006-01	SI Kwik Stage Bracket	1 Board	2.49	2.56
SI-3006-02	SI Kwik Stage Bracket	2 Board	6.10	6.27
SI-3006-03	SI Kwik Stage Bracket	3 Board	9.70	9.98

SI-Kwik Tie Bar



Code	Product	Angle (mm)	Length (m)	Weight (Kg.)	
				Painted	Hot Dip Galvanised
SI-3010-01	SI Kwik Tie Bar	40 x 400 x 5	1.200	4.08	4.20
SI-3010-02	SI Kwik Tie Bar	40 x 400 x 5	1.800	5.50	
SI-3010-03	SI Kwik Tie Bar	40 x 400 x 5	2.400	7.73	

SI KWICK STAGE SYSTEM is a robust system which has easy to operate capability, manufactured in full-compliance with the **EN-12810** and **EN-12811 Standards**.

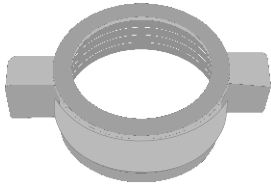
Pipes of high tensile steel grade S-235, S-275 and S-345 ensure the intrinsic strength of the system.

Certified welding is our another contributing feature, it's done with our latest automatic "**WELDING SPM**" of brand (**Feronius Austria**) which itself is self-certified to comply with the welding standard **EN3834-2 (Fusion welding)**.

SI KWICK STAGE SYSTEM is available in self, electro galvanized, hot dip and paint finish.

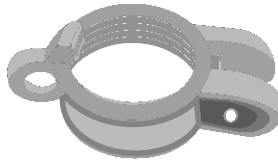
Hot Dip Galvanized Finish has an average thickness of **100 Microns** with high quality Zinc makes **SI KWICK STAGE SYSTEM** an "**All-Weather Tolerant**" system.

PROP NUT



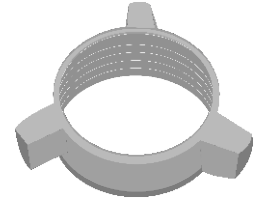
SI 10019

PROP NUT



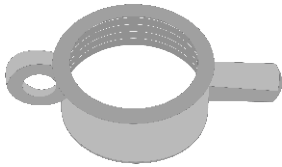
SI 10020

PROP NUT



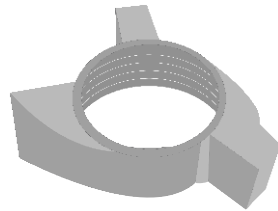
SI 10021

PROP NUT



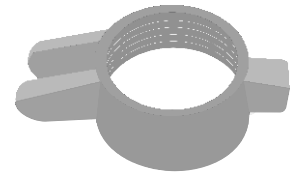
SI 10022

PROP NUT



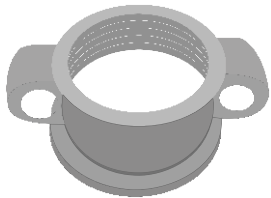
SI 10023

PROP NUT



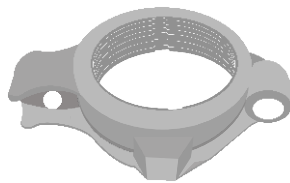
SI 10024

PROP NUT



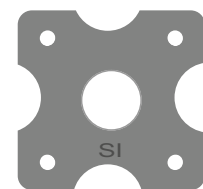
SI 10025

PROP NUT



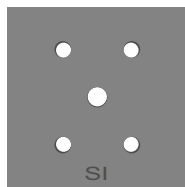
SI 10026

PROP BASE PLATE FLOWER-TYPE



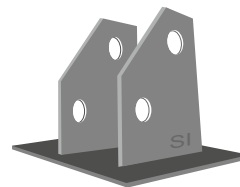
SI 10074

PROP BASE PLATE SQUARE-TYPE



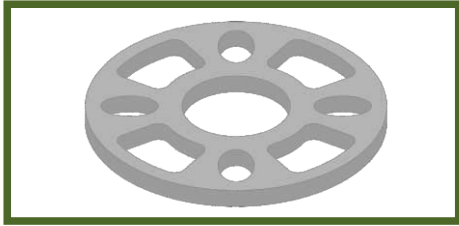
SI 10075

PUSH PULL PROP BASE



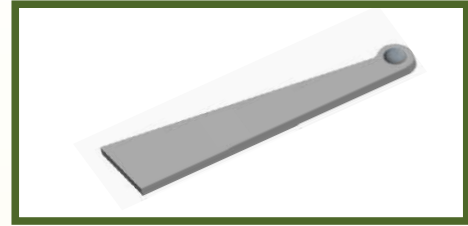
SI 10076

SI-Ring Rosette



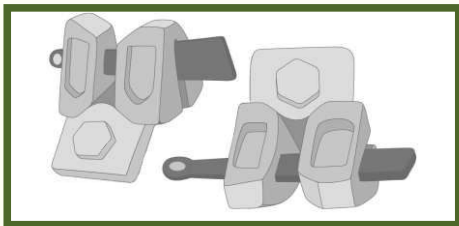
Code	Diameter	Thickness	Grade	Finish
SI-10036	121 mm	10 mm	S-345	Self

SI-Ring Wedge



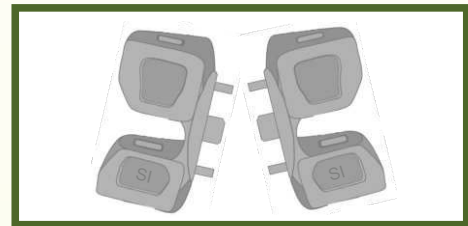
Code	Diameter	Thickness	Available Finish
SI-10076	121 mm	10 mm	Self

SI-Ring Brace End



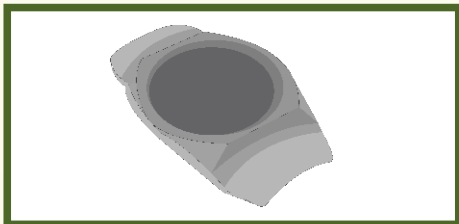
Code	Suitable for Tie Rod	Available Finish
SI-10078	48.3 mm	Self

SI-Ring Ledger End



Code	Suitable for Tie Rod	Available Finish
SI-10037	48.3 mm	Self

SI-Ledger Blade without Hole



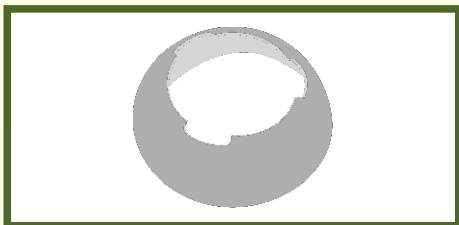
Code	Suitable for	Available Finish	
SI-10027	48.3 mm Dia (O.D.)	Zinc	Self

SI-Top Cup



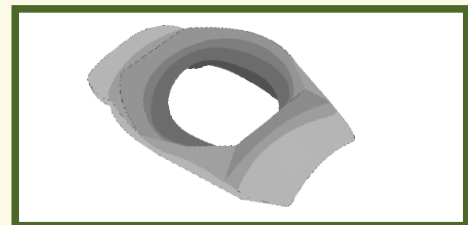
Code	Suitable for	Available Finish	
SI-10033	48.3 mm Dia (O.D.)	Zinc	Self

SI-Bottom Cup



Code	Suitable for	Available Finish	
SI-10034	48.3 mm Dia (O.D.)	Zinc	Self

SI-Base-Plate with Hole



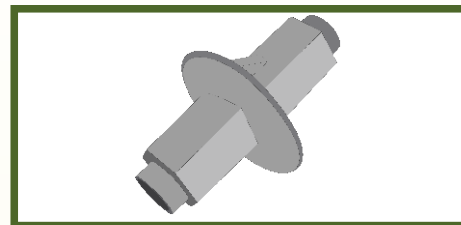
Code	Suitable for	Available Finish	
SI-10035	48.3 mm Dia (O.D.)	Zinc	Self

SI-Waller Plate



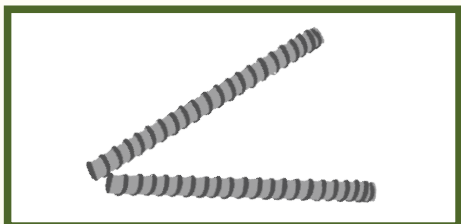
Code	Thickness	Available Finish	
SI-10039	4, 5, 6, 8 & 10 mm	Zinc	Self

SI-Water Barrier for Tie Rod



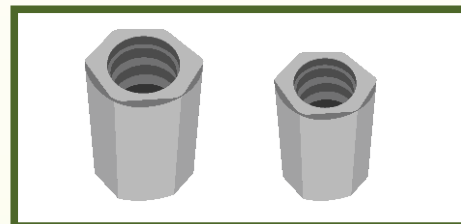
Code	Suitable for Tie Rod	Available Finish	
SI-10040	4, 5, 6, 8 & 10 mm	Zinc	Self

SI-Tie Rod



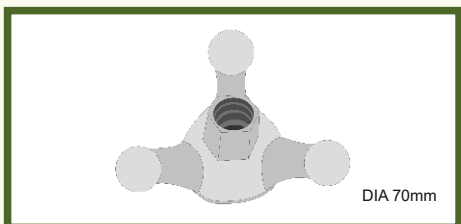
Code	Thickness	Available Finish	
SI-10060-01	15 / 17 mm	Zinc	Self
SI-10060-02	20 / 23 mm	Zinc	Self

SI-Tie Rod Connector Nut



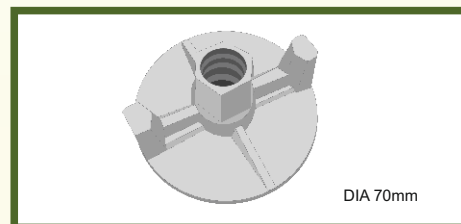
Code	Suitable for Tie Rod	Available Finish	
SI-10060	50 mm & 100 mm	Zinc	Self

SI-Casted Anchor Nut Three Lug Type-1



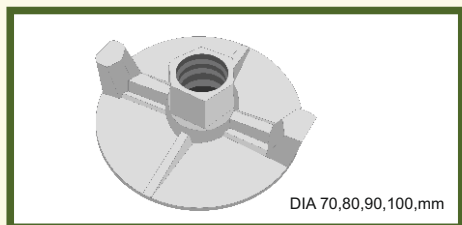
Code	Suitable for Tie Rod	Available Finish	
SI-10001	15 / 17 mm, 20 / 23 mm	Zinc	Self

SI-Forged Anchor Nut Two Lug



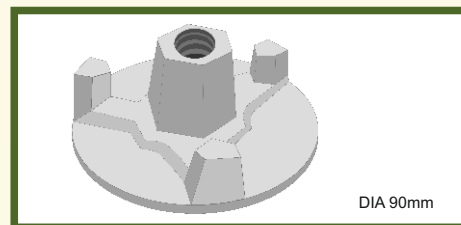
Code	Suitable for Tie Rod	Available Finish	
SI-10002	15 / 17 mm, 20 / 23 mm Dia	Zinc	Self

SI-Casted Anchor Nut Two Lug



Code	Suitable for Tie Rod	Available Finish	
SI-10003	15 / 17 mm, 20 / 23 mm	Zinc	Self

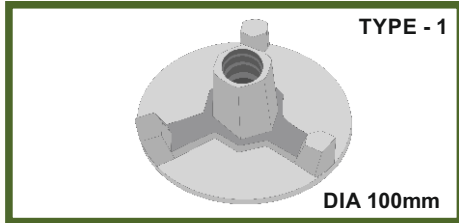
SI-Casted Anchor Nut Three Lug Type-2



Code	Suitable for Tie Rod	Available Finish	
SI-10004	15 / 17 mm, 20 / 23 mm Dia	Zinc	Self

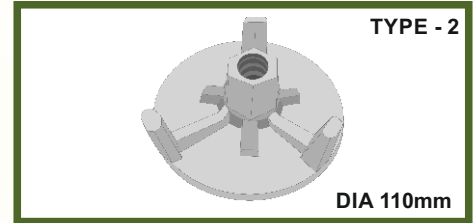
Si - ANCHOR NUTS

SI-Forged Anchor Nut Three Lug



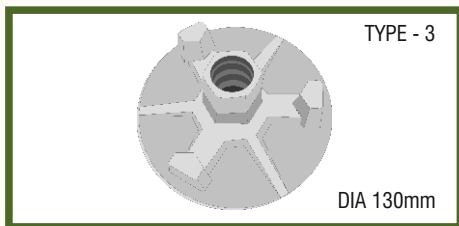
Code	Suitable for Tie Rod	Available Finish	
SI-10005	15 / 17 mm, 20 / 23 mm Dia	Zinc	Self

SI-Forged Anchor Nut Three Lug



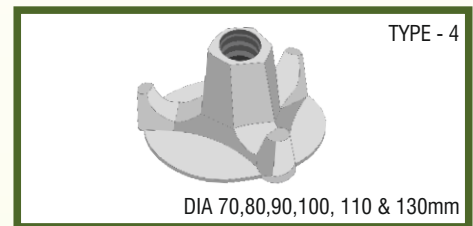
Code	Suitable for Tie Rod	Available Finish	
SI-10006	15 / 17 mm, 20 / 23 mm Dia	Zinc	Self

SI-Forged Anchor Nut Three Lug



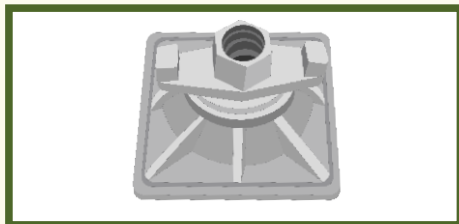
Code	Suitable for Tie Rod	Available Finish	
SI-10007	15 / 17 mm, 20 / 23 mm Dia	Zinc	Self

SI-Forged Anchor Nut Two Lug



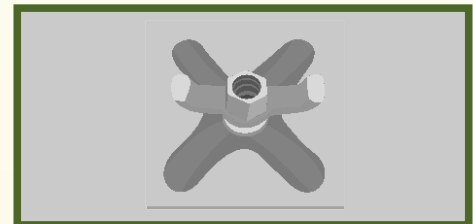
Code	Suitable for Tie Rod	Available Finish	
SI-10008	15 / 17 mm, 20 / 23 mm Dia	Zinc	Self

SI-Combination Plate Square Type-1



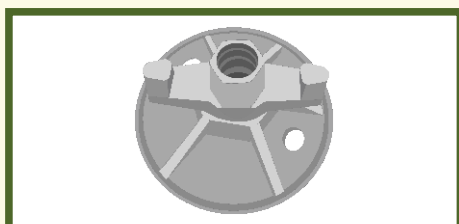
Code	Suitable for Tie Rod	Available Finish	
SI-10029	15 / 17 mm, 20 / 23 mm	Zinc	Self

SI-Combination Plate Square Type-2



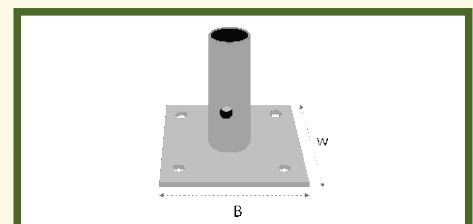
Code	Suitable for Tie Rod	Available Finish	
SI-10030	15 / 17 mm, 20 / 23 mm Dia	Zinc	Self

SI-Combination Plate Round Type



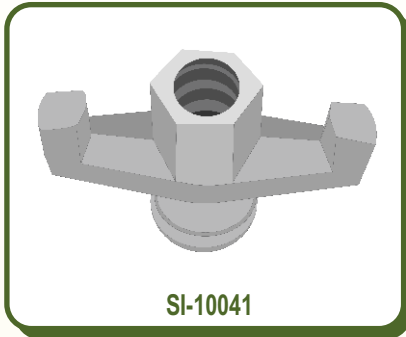
Code	Suitable for Tie Rod	Available Finish	
SI-10031	15 / 17 mm, 20 / 23 mm Dia	Zinc	Self

SI-Base-Plate

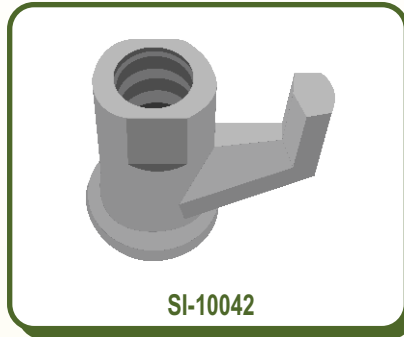


Code	Size (mm)	Available Finish		
SI-9007	150 x 150 x 5	Zinc	Painted	Hot Dip Galvanized

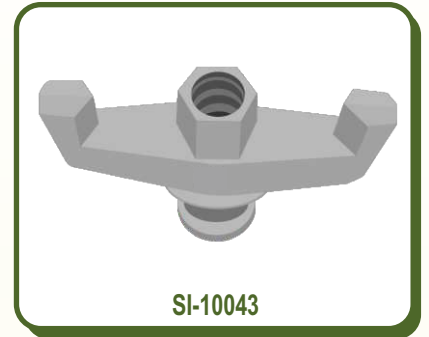
AVAILABLE IN ELECTRO GALVANIZED & HOT DIP FINISH



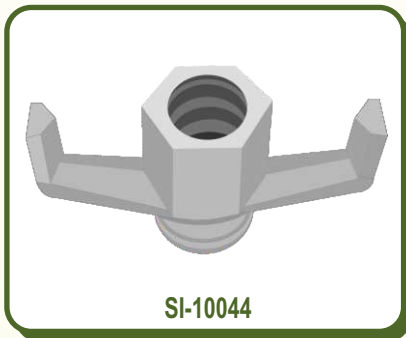
SI-10041



SI-10042



SI-10043



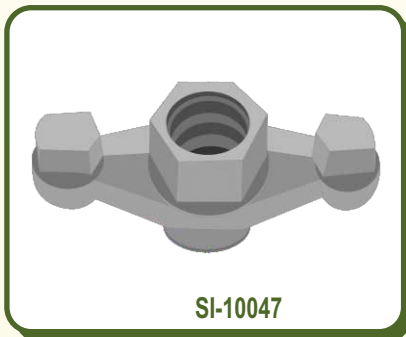
SI-10044



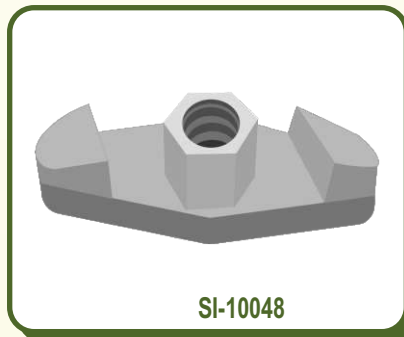
SI-10045



SI-10046



SI-10047

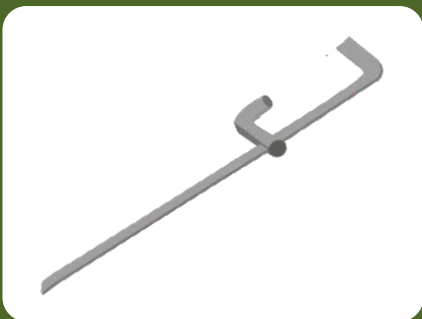


SI-10048



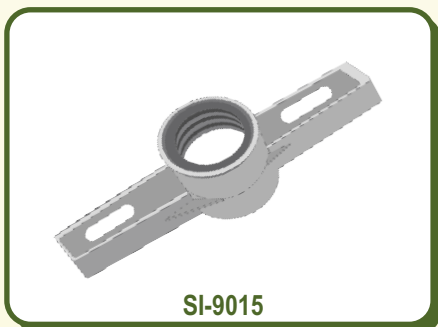
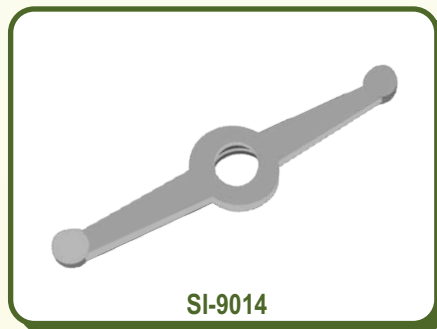
SI-10049

SHUTTERING CLAMP

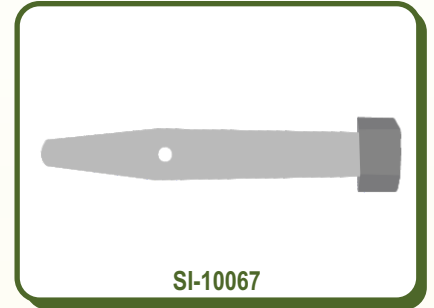
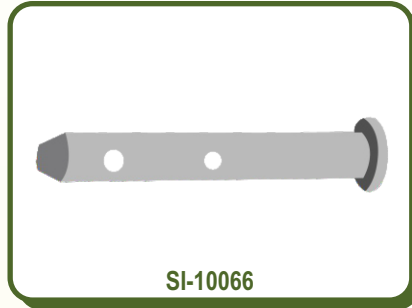
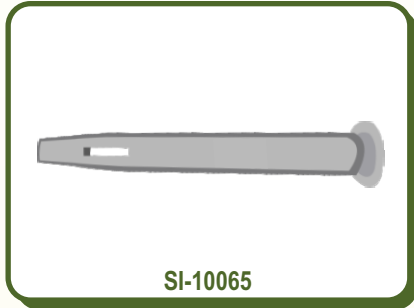


CODE	LENGTH	AVAILABLE FINISH	
SI-10059-01	600mm	PAINTED	SELF
SI-10059-02	700mm	PAINTED	SELF
SI-10059-03	800mm	PAINTED	SELF
SI-10059-04	900mm	PAINTED	SELF
SI-10059-05	1000mm	PAINTED	SELF
SI-10059-06	1100mm	PAINTED	SELF
SI-10059-07	1200mm	PAINTED	SELF

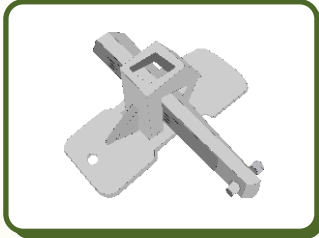
AVAILABLE IN ELECTRO GALVANIZED & HOT DIP FINISH



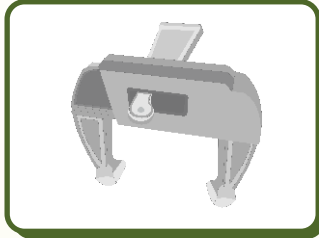
AVAILABLE IN ZINC SELF & HOT DIP FINISH



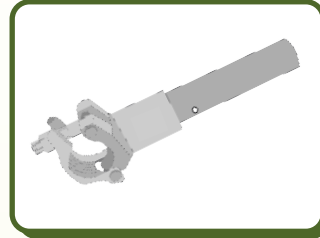
SI RAPID CLAMP



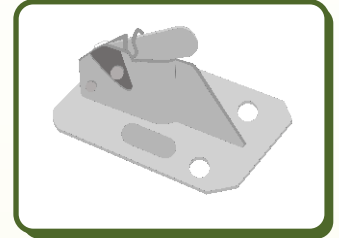
SI FORMWORK CLIP



SI SPIGOT CLAMP

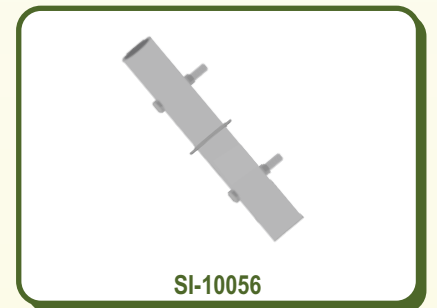
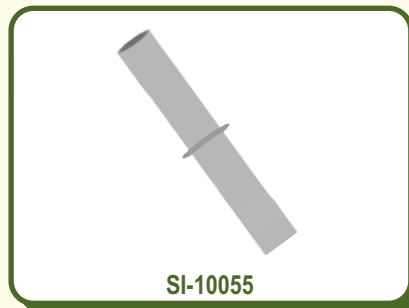
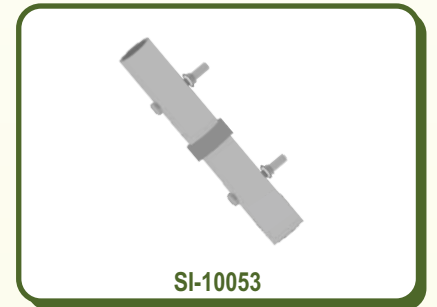
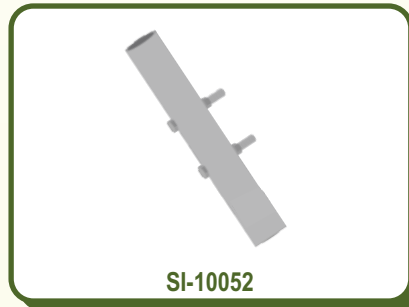


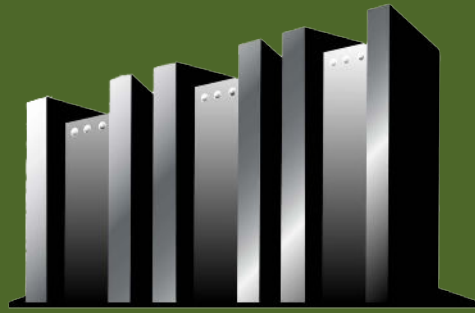
SI SPRING CLAMP



CODE		AVAILABLE FINISH		CODE		AVAILABLE FINISH		CODE		AVAILABLE FINISH		CODE		AVAILABLE FINISH		
SI-10032	ZINC	SELF		SI-10038	ZINC	SELF		SI-10050	ZINC	SELF	HOT DIP		SI-10058	ZINC	SELF	HOT DIP

AVAILABLE IN ZINC, SELF, HOT DIP & PAINTED FINISH

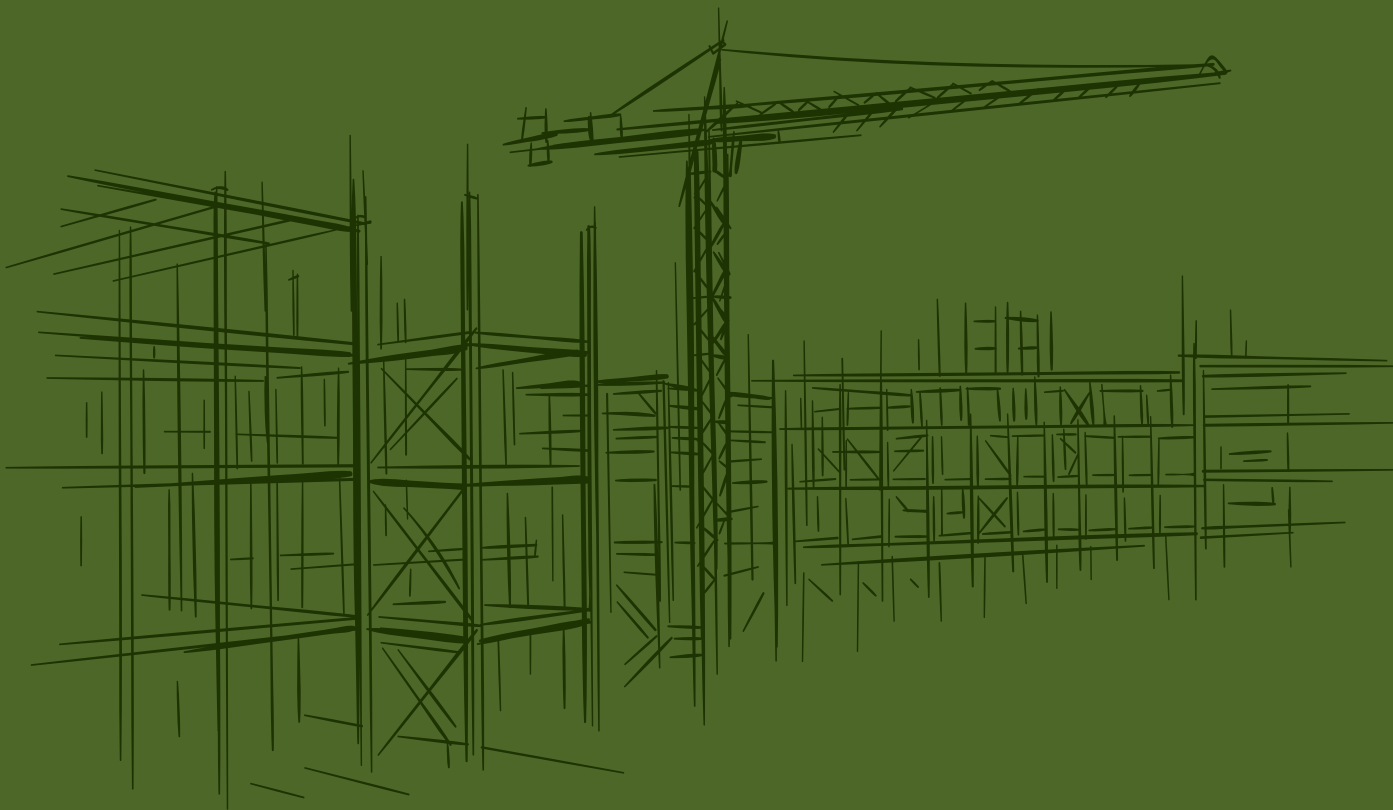




BOKOBZA

MACHINERY IMPORTS

Bokobza Machinery Imports



BOKOBZA MACHINERY IMPORTS

Head Office & Warehouse: 39 Shalva Village, Southern District, ISRAEL

Contact us at: +973-55-3088868

E-mail: sales@BokobzaImports.com | yaniv@BokobzaImports.com

Website: BokobzaImports.com